

OVERVIEW

For over a decade, SelectTech GeoSpatial has been developing and building small unmanned aircraft systems (sUAS). These sUAS are designed and built in Springfield Ohio.

SelectTech GeoSpatial has been providing sUAS to government agencies, academic institutions and industry users. These aircraft have been used for data gathering, environmental testing, remote sensing and high-speed, short distance supply missions. They are designed to be highly configurable/mission specific and very durable, resulting an airframe that is well suited for tough industrial, public service and specialized applications.

SelectTech's Advanced Manufacturing Facility is located at the Springfield/Beckley airport (KSGH) adjacent to the Ohio Beyond Visual Line of Site (B-VLOS) UAS testing range. Also nearby is Dayton Ohio's rich supply base for materials and sub-systems. This range affords full mission testing of various sUAS designs. Combined with a strong supply source and on-site testing, SelectTech can deliver custom sUAS in very short order.



Made in the USA

All design and manufacturing are performed in the United States at our Ohio based facility



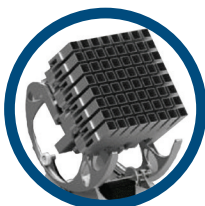
Mission Focus

Using your flight and sensor/payload requirements, we create a custom designed aircraft that addresses your unique mission

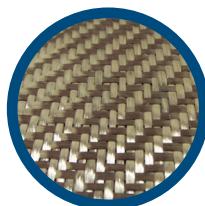


eVTOL Options

Fixed wing and multi rotor designs are available as well as custom built ground stations and launch systems



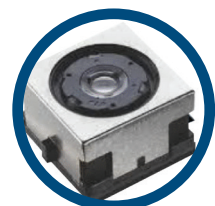
Multi-Band Communications & Novel Antennas



Lightweight Composite Materials



Energy Dense Batteries & Propulsion System



Wide Variety of Sensor, Camera, & Payload Options

EH-4 eVTOL

The EH-4 eVTOL quadcopter is a rugged and versatile sUAS that can be custom configured to support small weight requirements. Perfect for transporting a payload mass of 1 to 5 pounds with a flight duration of 20 minutes (mission dependent) at full payload weight, the EH-4 has precision flight performance and flexibility for defense, industrial, and commercial applications. The EH-4 has multiple payload options with our integrated connection system. Utilizing high density, low-cost, interchangeable battery systems, there is no wait time for charging. Designed, built and tested in the USA.



PAYLOAD	LINK RANGE	FLIGHT TIME	DIMENSIONS
Up to 5 lbs	8 miles + terrain dependant	Up to 20 minutes	Height: 14" (adjustable) Length: tip to tip 46"/motor to motor 32"

EH-8 eVTOL

The EH-8 eVTOL eight-propeller coaxial rotor system is a rugged and extremely versatile sUAS that can also be custom configured to support a variety of mission requirements. Perfect for transporting medium sized payload mass of up to 8 pounds with a flight duration of 20 minutes (mission dependent), the EH-8 is built for rugged and harsh applications. And due to its larger payload capacity and coaxial system, the eVTOL can carry multiple payloads for added flexibility. The EH-8 also utilizes high density, low-cost, interchangeable battery systems to reduce charging wait times. Designed, built and tested in the USA.



PAYLOAD	LINK RANGE	FLIGHT TIME	DIMENSIONS
Up to 8 lbs	8 miles + terrain dependant	Up to 20 minutes	Height: 14" (adjustable) Length: tip to tip 46"/motor to motor 32"

EH-8HL (Heavy- Lift) eVTOL

The EH-8HL eVTOL eight-propeller coaxial rotor system is a heavy-lift, rugged, and extremely versatile sUAS that can be custom configured for heavier loads. Perfect for transporting larger payloads of up to 15 pounds with a flight duration of 15 to 20 minutes (mission dependent), the EH-8HL has precision flight performance and flexibility for defense, industrial, and commercial applications. The EH-8HL also has the ability to carry multiple payloads with our integrated connection system. SelectTech has a number of battery systems available to accommodate unique mission requirements and reduce charging wait times. Designed, built and tested in the USA.



PAYLOAD	LINK RANGE	FLIGHT TIME	DIMENSIONS
Up to 15 lbs	8 miles + terrain dependant	Up to 20 minutes	Height: 23" (adjustable) Length: tip to tip 64"/motor to motor 45"