

### OVERVIEW

The fully customizable EP-3000 is a tough, survivable, fixed-wing sensor platform designed for missions that require long loiter times (greater than 1 hour). The aircraft that can be tailored to user requirements with a high payload capacity that can accommodate a wide variety of sensors, cameras, or other payloads. Rugged and dependable, principal applications include: precision agriculture services, public utilities applications, emergency response, and search and rescue missions.



#### Made in the USA

All design and manufacturing are performed in the United States at our Ohio based facility



#### Mission Focus

We take your sensor/payload and custom design a solution based on your needs and requirements



#### Fixed Wing or Rotary

A large variety of both fixed wing and rotary platforms with a variety of control and launch options

**For additional information, or a systems quotation, please contact us at:**  
**[info@sgamf.com](mailto:info@sgamf.com)**

### GENERAL SPECIFICATIONS

- Loiter time - greater than 1 hour
- On board data recording and/or data down link
- Light weight EPS with fiberglass skin Kevlar® available
- Easily removable wings/Sensor Pod
- Folding propeller and high efficiency electric out-runner motor
- Modularized components for easy assembly/disassembly/repair
- EO/IR/NIR sensor options
- Electric/LiPo power system
- Polystyrene foam core & fiberglass wings
- 8 foot (2.4 meter) wingspan
- 10 pounds dry / 2.5 payload
- Large payload bay - 360 cubic inches (6"x12"x10" HxWxL)
- Woven carbon fiber tail boom

### SYSTEM DETAILS

The SelectTech EP-3000 base design is highly configurable/mission specific and very durable, resulting in an airframe well-suited for tough industrial or agricultural applications. Below is a list of current system configurations. Other customer specified options are available.

#### Power Train

Motor: Himax® 3528-1000 or customer specified

ESC: Castle 75 Amp

Battery: 14.8 Volt / 6000 MAh 451P / Power Pole® connections

#### Autopilot

Option 1 – Pixhawk™ by 3-D Robotics

Option 2 – Customer specified

#### Radio

Option 1 - Spectrum DX-8 / 8 channel with telemetry down-link

Option 2 – Spectrum DX-6 / 6 channels with telemetry down-link

Option 3 – Customer specified

#### Ground Station configuration

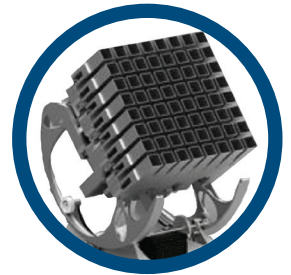
- Standard lap-top computer with telemetry
- Ruggedized lap-top computer with telemetry
- Android tablet computer with telemetry
- Other – customer specified

#### Construction

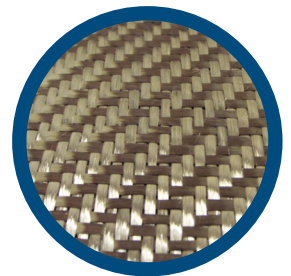
- Standard carbon fiber, fiber glass / Kydex®
- Kevlar® and carbon fiber components available

#### Sensors and Gimbal Integration Options

- Electro Optical - Customer specified
- Infrared or NIR - Customer specified
- FLIR Tau Infrared - Customer specified
- Other Sensors - Customer specified



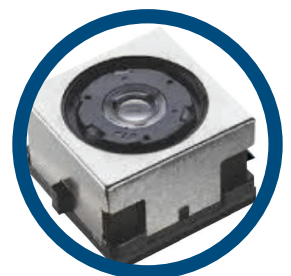
**Multi-Band  
Communications  
& Novel Antennas**



**Lightweight  
Composite  
Materials**



**Energy Dense  
Batteries &  
Propulsion System**



**Wide Variety of  
Sensor, Camera, &  
Payload Options**

**For additional information, or a systems quotation,  
please contact us at: [info@sgamf.com](mailto:info@sgamf.com)**